

Voice

# Esther

Lyrics by Rachel Winter

Music by Don "Orfeo" Rechtman

Allegro ♩ = 60

6  
Es-ther came in - to the world that Jan-u - ar-y day\_\_\_ Lit

11  
up the world with hersmile Stor-ies of her child-hood days\_ Sit and she'll tell you a

16  
while A pi-o-neer wo-man she\_\_\_ be-came Rais-ing four boys in Al-a bam'\_ The

21  
on-ly Jew-ish fam-ily for miles and a day Her hus-band of-ten a - way But

26  
Es - ther she is strong And shefound ways to get a - long\_\_\_ She has

31  
soft hands, and a strong heart A sto-ry-tell-er wholights up the dark A chef, a gar-den-er,

36  
and a danc-er too\_\_\_ Es-ther, is there an-y-thing you can't do\_\_\_ Es-ther is there

42  
an-y-thing you can't do? A moth-er and a lov-ing wife\_ A friend to those in need

47

Es-ther is a wo-man ou - r world and our hearts need

52

Es-ther is a wo man ou-r world and our hearts need

60

Boys moved out, Es-ther and Ed\_ Have the house to them-selves for a time But

64

giv-ing to oth-ers is a deep need When your heart is the giv-ing kind The

68

coup-le con-tin-ued to op-en their home And their hearts to those in need

72

Nev-er a stran-ger would\_ there be With Es-ther's gen - er - os - i - ty\_

76

Home-made sweets for the bank-er\_ Tooth ad - vice for eve - ry tak-er

80

Es-ther's life is marked with the smiles she gives and she re - ceives\_ She has

84

soft hands, and a strong heart A sto-ry-tell-er who lights up the dark A chef, a gar-den-er,

89 and a danc-er too\_\_\_ Es-ther, is there an-y-thing you can't do\_\_\_ Es-ther is there

95 an-y-thing you can't do? A moth-er and a lov-ing wife\_ A friend to those in need

100 Es-ther is a wo-man ou - r world and our hearts need

105 Es-ther is a wo man ou - r world and our hearts need

113 Sons all mar-ried, she's a moth-er in law Ov-er-joyed to add new fam-il - y

117 Next thing you know, lit-tle tin - y ones\_ Be - gin ap-pear-ing on the scene She's a

121 grand-ma now, And her cir-cle of love\_grows and wid-ens With each new-born grand-child

125 Es-ther's smiles so wide Heart filled up with pride To see her fam-il - y\_\_\_ So

131 whole and com - plete\_\_\_ There are sad mo-ments, too But ev-en in life's loss-es

135 Allegro ♩ = 60

Es-ther Your light comes shin-ing through You make time to bake And

139

lis-ten to a friend's heart-ache Ev-en as your own world shakes Es-ther you find a way...

143

Es-ther, you're a daugh-ter, A sis-ter, and a mo-ther A lov-ing wife, And a

148

treas-ured Grand-ma too You've touched so man - y hearts And lit the way when

153

some were lost To - day we cel-e - brate The mag - ni-fi-cant wo-man that you are

158

— She has soft hands, and a strong heart A sto - ry - tell-er who

162

lights up the dark A chef, a gar-den-er, and a danc-er too Es-ther, is there

167

an - y-thing you can't do Es-ther is there an - y-thing you can't do? A

172

moth-er and a lov-ing wife A friend to those in need Es-ther is a

177



wo-man ou - r world and our hearts need

Es-ther, you're our ma - tri - arch - al

182

**Adagio** ♩ = 104

**Allegro** ♩ = 54



Queen

We love you Es-ther, sweet

Es-ther is a wo-man ou - r

188



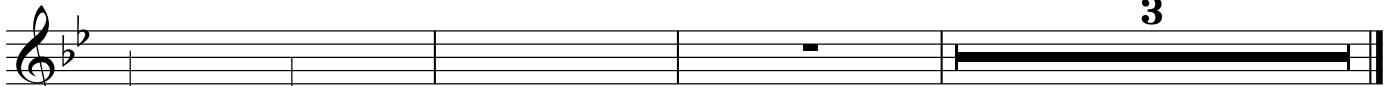
world and our hearts need

Es - ther is the wo - man

192

**Allegro** ♩ = 60

**rall..**



our

hearts

need

**3**